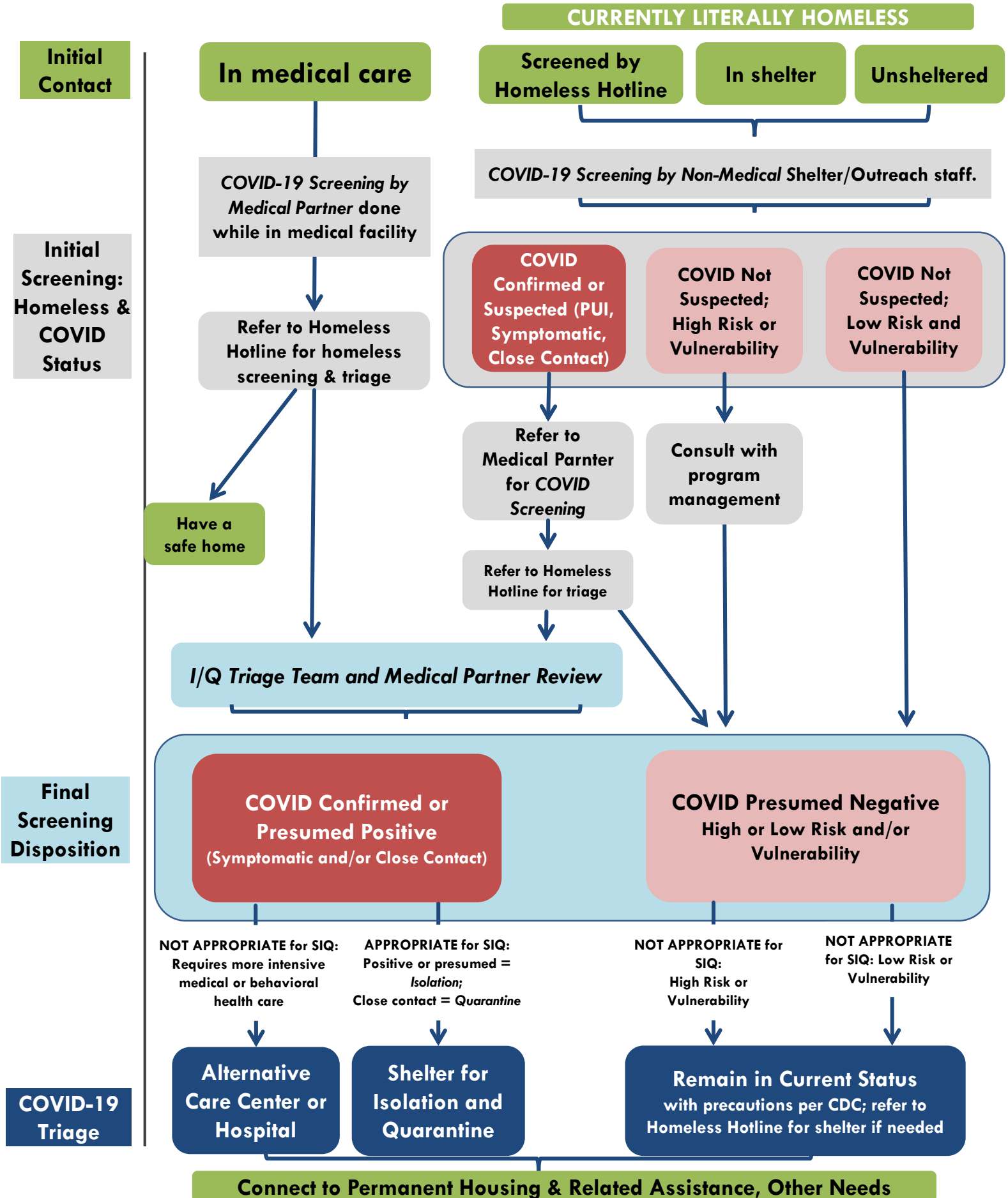


Columbus/Franklin County COVID-19 Screening & Triage Protocol for People Experiencing Homelessness



Initial Contact

In medical care

CURRENTLY LITERALLY HOMELESS

Screened by Homeless Hotline

In shelter

Unsheltered

COVID-19 Screening by Medical Partner done while in medical facility

COVID-19 Screening by Non-Medical Shelter/Outreach staff.

Refer to Homeless Hotline for homeless screening & triage

COVID Confirmed or Suspected (PUI, Symptomatic, Close Contact)

COVID Not Suspected; High Risk or Vulnerability

COVID Not Suspected; Low Risk and Vulnerability

Have a safe home

Refer to Medical Partner for COVID Screening

Consult with program management

Refer to Homeless Hotline for triage

I/Q Triage Team and Medical Partner Review

Final Screening Disposition

COVID Confirmed or Presumed Positive (Symptomatic and/or Close Contact)

COVID Presumed Negative High or Low Risk and/or Vulnerability

NOT APPROPRIATE for SIQ: Requires more intensive medical or behavioral health care

APPROPRIATE for SIQ: Positive or presumed = Isolation; Close contact = Quarantine

NOT APPROPRIATE for SIQ: High Risk or Vulnerability

NOT APPROPRIATE for SIQ: Low Risk or Vulnerability

Alternative Care Center or Hospital

Shelter for Isolation and Quarantine

Remain in Current Status with precautions per CDC; refer to Homeless Hotline for shelter if needed

COVID-19 Triage

Connect to Permanent Housing & Related Assistance, Other Needs