



LSS
CHOICES

For Victims of Domestic Violence

Domestic Violence 101

Presented by

Lillian Howard, LISW-S, LICDC-CS

LSS CHOICES Director of Clinical and Supportive Services



Every day we provide the basic human needs of food, shelter, safety and healing to people in 28 Ohio counties by providing a meal, a bed, health care and hope. Because each life deserves respect and dignity.

By serving people in need, we are creating a better world.

objectives

-
- » Define Domestic Violence
 - » Review recent Domestic Violence statistics
 - » Understand the Cycle of Violence
 - » Recognize the characteristics of survivors
 - » Identify risks of survivors of Domestic Violence
 - » Effectively assess for Intimate Partner Violence
 - » Review CHOICES services



what is domestic violence?



definitions

Abuse is a pattern of physically and emotionally violent and coercive behaviors that one person uses to exercise power and control over another.

Intimate partner violence (IPV)

happens when the abuse is used to gain power over an intimate partner.

The neighbors had called the police five or six times before, but this time Dina knew it was different. He would kill her.



statistics



1 in 3 women
& 1 in 4 men will experience
domestic violence in their
lifetime.

Every 9 seconds,
a woman is abused.



3 women are killed
each day by their husband or
boyfriend.

15.5+ million US
children are exposed to
domestic violence each year. 90%
are eyewitnesses to violence.



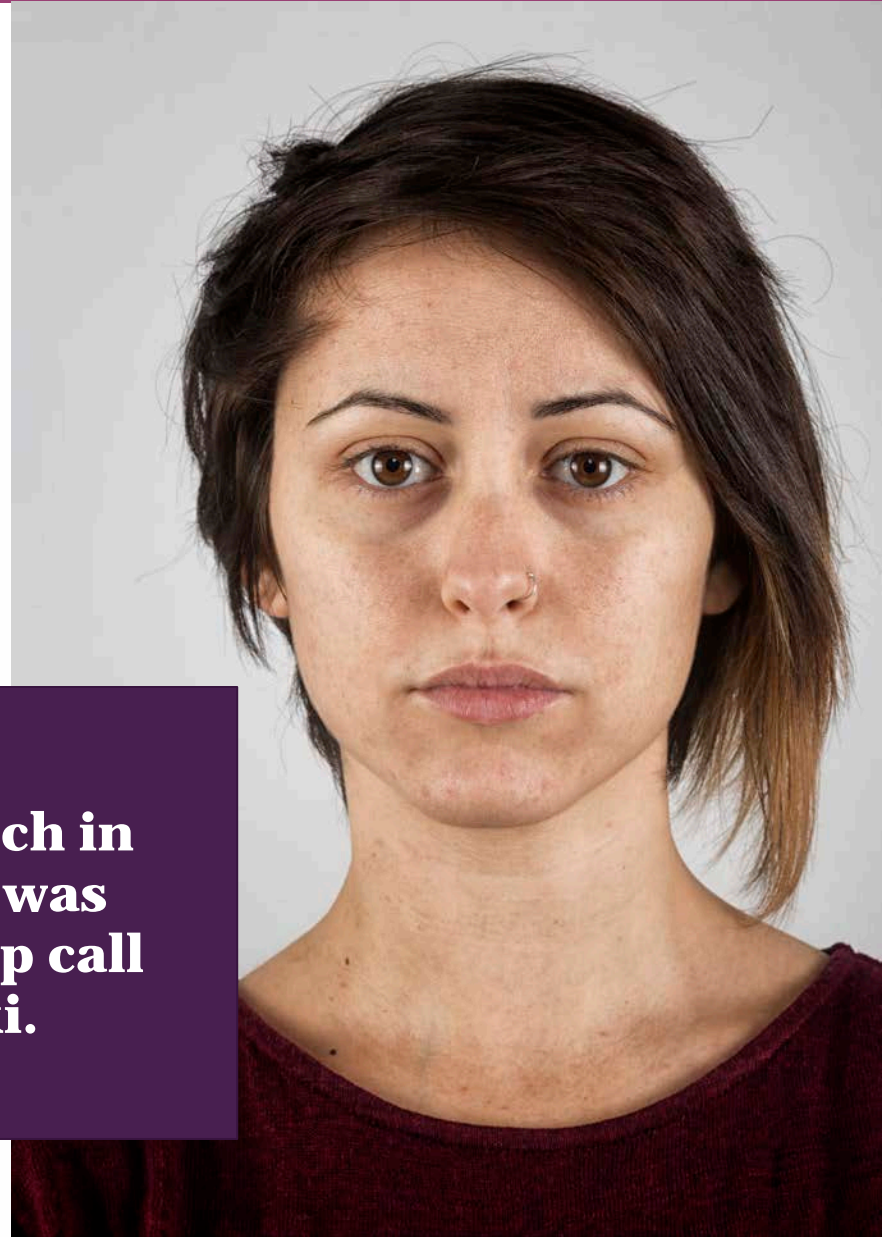
**“I was in an
abusive
relationship
for three and
a half years.
It was a
very broad
spectrum
of abuse.”
— Anna,
survivor**



Domestic violence is the leading cause of injury to women – more than car accidents, muggings and rape combined.

IPV is the leading cause of female homicide and injury-related deaths during pregnancy.

The punch in the face was a wakeup call for Nikki.



Ohio domestic violence fatalities

June 2016-June 2017

- » 115 Fatalities in 84 cases.
- » 32% of cases involved a suicide.
- » 100% of homicide/suicide cases involved guns.
- » All completed homicide/suicides were perpetrated by males.
- » 4 attackers were killed by law enforcement.
- » 87% of fatal incidents involved guns.
- » 1 law enforcement officer killed by a perpetrator.
- » 23% of cases involved children at scene.
- » 10% of cases required SWAT Response.
- » 116 People were injured or killed by guns.



**Jowanda
knew she
deserved
better.**

power and control wheel

Methods of exerting power

Outside dark area – physical and sexual violence

Inner area – forms of abuse

All pieces of the pie are held together by the threat of violence.



characteristics of survivors

Research has shown that regular abuse causes victims to develop certain characteristics and behaviors including:

- » Puts up with abusive behavior
- » Poor self-image
- » Economically and emotionally dependent on the abuser
- » Uncertain of his or her own needs
- » Low self-esteem
- » Believes the abuser will change
- » Feels powerless
- » Believes that jealousy is proof of love

Jane thought when the baby came, he would change...



HEALTH

Undetected IPV may result in misdiagnoses, improper testing, and inappropriate treatment or management of health conditions.

- « Symptoms of depression, anxiety, post-traumatic stress disorder, insomnia.
- « Inappropriate affect (e.g., lack of expressiveness, minimal eye contact).
- « Eating disorders (e.g., anorexia, bulimia).
- « Frequent use of prescribed anxiolytics or pain medications.
- « Abuse of drugs, alcohol, or tobacco.
- « Suicidal or homicidal ideation or attempts

Intimate partner violence results in more than 18.5 million mental health care visits each year.

FATALITY AND INJURY

- « On average, only 70% of nonfatal partner violence is reported to law enforcement.
- « Of those not reporting,
 - 34% average stated victimization being a private/personal matter as reason for not reporting
 - 15% of women feared reprisal
 - 12% of all victims wished to protect the offender
 - 6% of all victims believed police would do nothing
- « Approximately one-half of the orders obtained by women against intimate partners who physically assaulted them were violated.
- « More than two-thirds of the restraining orders against intimate partners who raped or stalked the victim were violated.

Everyday in the US, more than three women are murdered by their husbands or boyfriends

The cycle continues into the next generation



Common injuries associated with intimate partner violence

- « Patterned injuries, such as injuries to both wrists.
- « Multiple or frequent injuries (contusions, abrasions, minor lacerations, human bites) in various stages of healing.
- « Sprains or fractures, especially fractured teeth, fractures to the mandible, maxilla, orbit, and spiral wrist fractures.
- « Burns (cigarette or rope burns) or gunshot/stab wounds.
- « Localized hair loss and scalp injury.
- « Detached retina or perforated tympanic membrane.
- « Concussion, subdural hematoma, or cerebral bleeding associated with bruising to neck and back of head from choking or head banging.
- « Signs of sexual assault or injuries to genitalia and breasts.

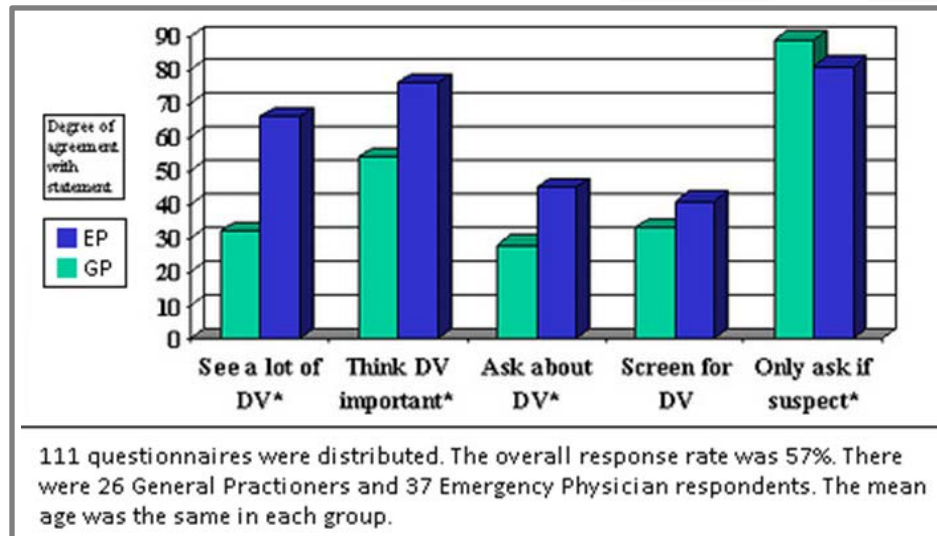


Intentional Injuries



Open ended questions are most effective when assessing for intimate partner violence.

- « "How do you and your partner tend to disagree with each other?"
- « "How many emergency-room visits, injuries, or accidents have you had this year?"



Assessment of Immediate Safety

- « "Are you in immediate danger?"
- « "Is your partner at the healthcare facility now?"
- « "Do you want to (or have to) go home with your partner?"
- « "Do you have somewhere safe to go?"
- « "Has the violence gotten worse?"

Assessment of Pattern and History

- « "How long has the violence been going on?"
- « "Have you ever been hospitalized because of the abuse?"
- « "Can you tell me about your most serious event?"

Interventions will vary based on

- « Severity of the abuse
- « Patient's decisions about what he/she wants for assistance at that time
- « If the abuse is happening currently.

It is important to let the patient know that you will help regardless of whether she decides to stay in or leave the abusive relationship.

Things You Can Do

- « Provide validation
- « Listen non-judgmentally
- « “I am concerned for your safety (and the safety of your children)”
- « “You are not alone and help is available”
- « “You don’t deserve the abuse and it is not your fault.”
- « Offer the patient immediate and private access to phone CHOICES.
- « If the patient wants immediate police assistance, offer to assist in placing the call.
- « Reinforce the patient’s autonomy in making decisions regarding her safety.



LSS CHOICES for Victims of Domestic Violence

- » The only domestic violence safe haven shelter in Franklin County
- » 24-hour crisis and information hotline
- » Counseling services
- » Support groups
- » Legal and community advocates



27,117

Nights of shelter



3,562

Hotline calls

**“There’d be some
good days and
some very bad
days.” – Donetta,
survivor**



24 Hour Crisis and Information Hotline 614-224-4663 (HOME)

- » The only one of its kind in Franklin County
- » Available 365 days a year
- » Trained staff listen, ask questions, discuss safety plans and refer callers to partner programs

Sandy couldn't endure the abuse any longer. In desperation, she contacted the CHOICES hotline for help.



Temporary Shelter

- » The only intimate partner violence safe haven shelter in Franklin County
- » Current shelter has 51 beds/average census is over 70
- » Open to women, men and children fleeing from imminent danger

Hazel and her toddler came to the CHOICES shelter fleeing a violent husband she barely knew.



Counseling and Support Groups

- » Individual community-based counseling and resources
- » Community-based peer support groups
- » Referrals to other partners and programs

Andrea went to four therapy sessions but eventually went back to her abuser. Six months later, she finally got the courage to leave.



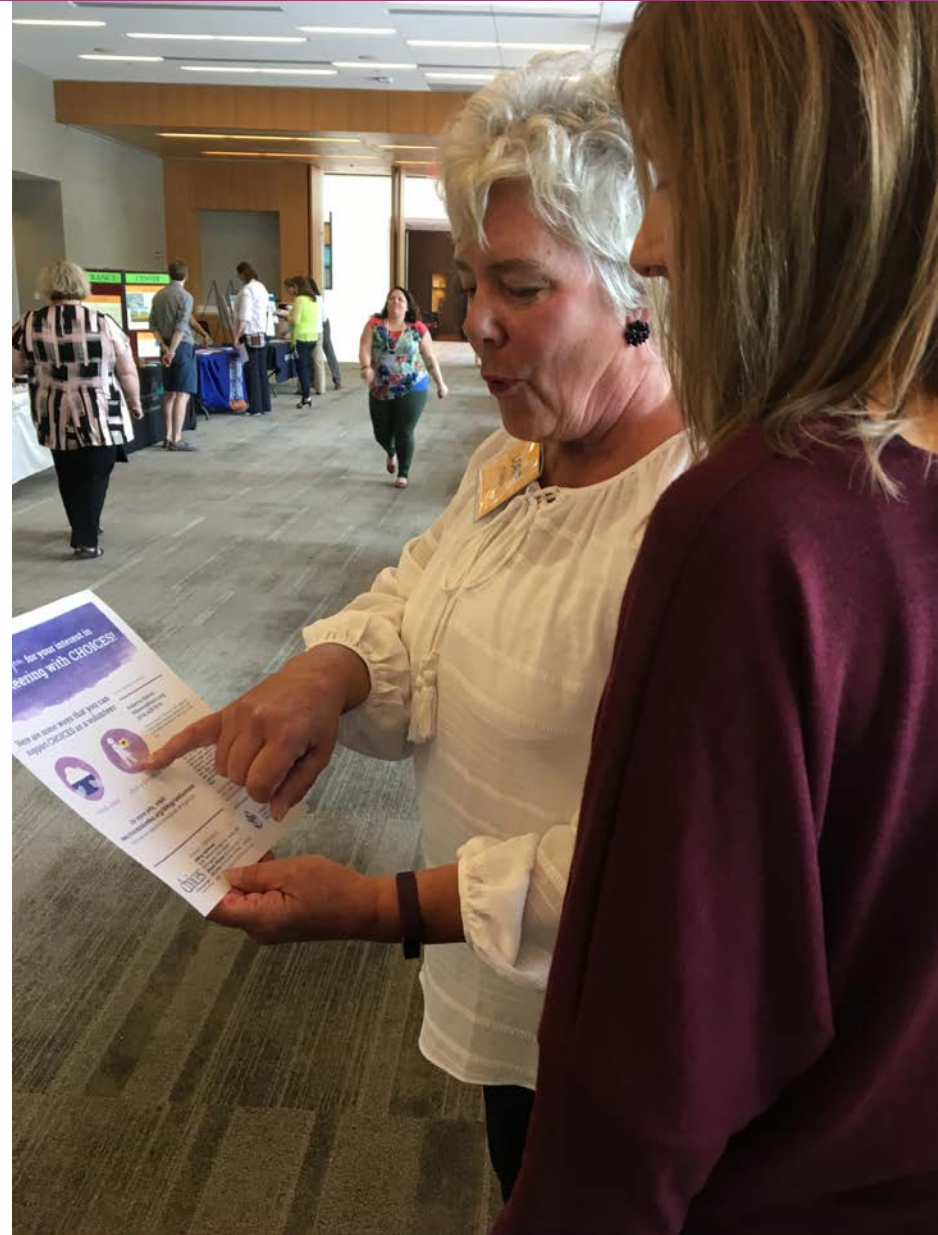
Legal and Community Advocates

- » Case management services
- » Legal support
- » Lethality assessment program (LAP)



Community Education and Training

- » Community groups
- » Professional training
- » Health fairs and community awareness days



Get Involved!

- » Donate!
- » Stay informed and speak out
- » Provide a meal
- » Donate needed items
- » Follow CHOICES and LSS on Facebook, Twitter and Instagram



Ohio Domestic Violence Network (ODVN)

www.odvn.org
(800)934-9840

National Domestic Violence Hotline

(800) 799-7233

Sexual Assault Response Network of Central Ohio (SARNCO)

www.ohiohealth.com/sexualassaultresponsenetwork
(614)267-7020

Rape, Abuse, and Incest National Network (RAINN)

www.rainn.org
(800)656-HOPE

Questions?

[**lssnetworkofhope.org/choices**](https://lssnetworkofhope.org/choices)



LSS
CHOICES

For Victims of Domestic Violence

thank you

WE ARE CREATING A BETTER WORLD BY SERVING PEOPLE IN NEED